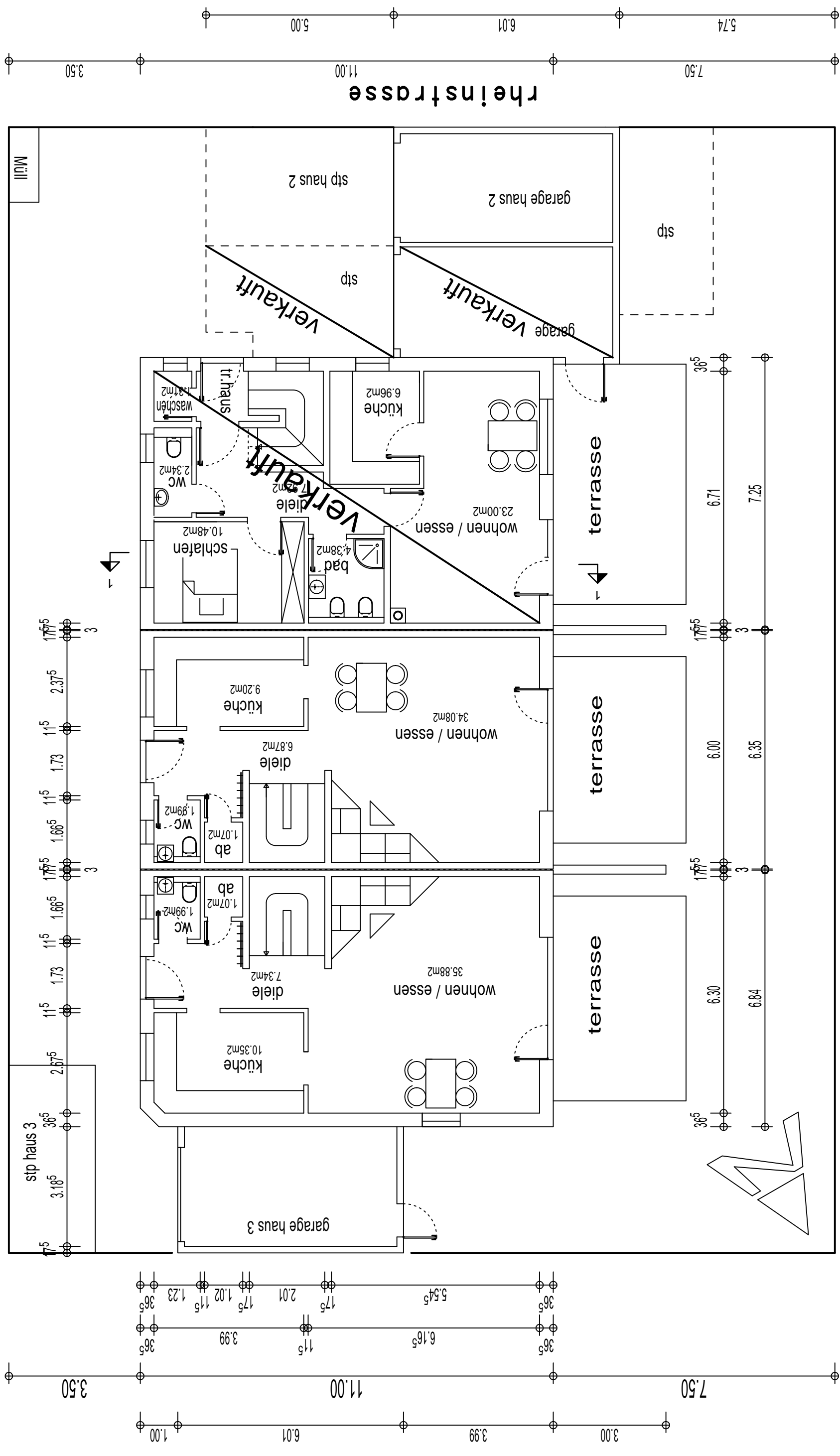


grundriss erdgeschoss

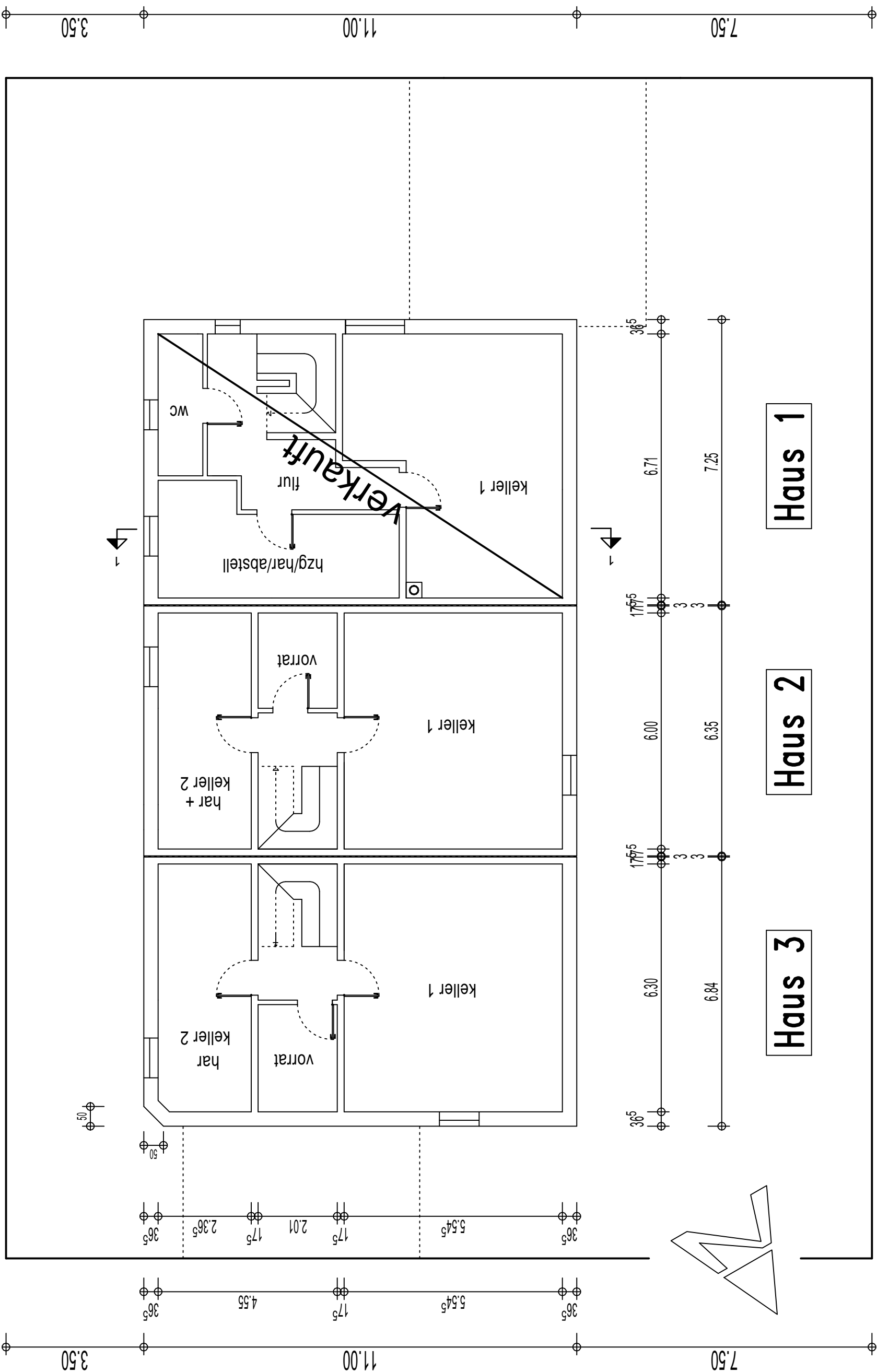


Haus 1

Haus 2

Haus 3

rheinstrasse

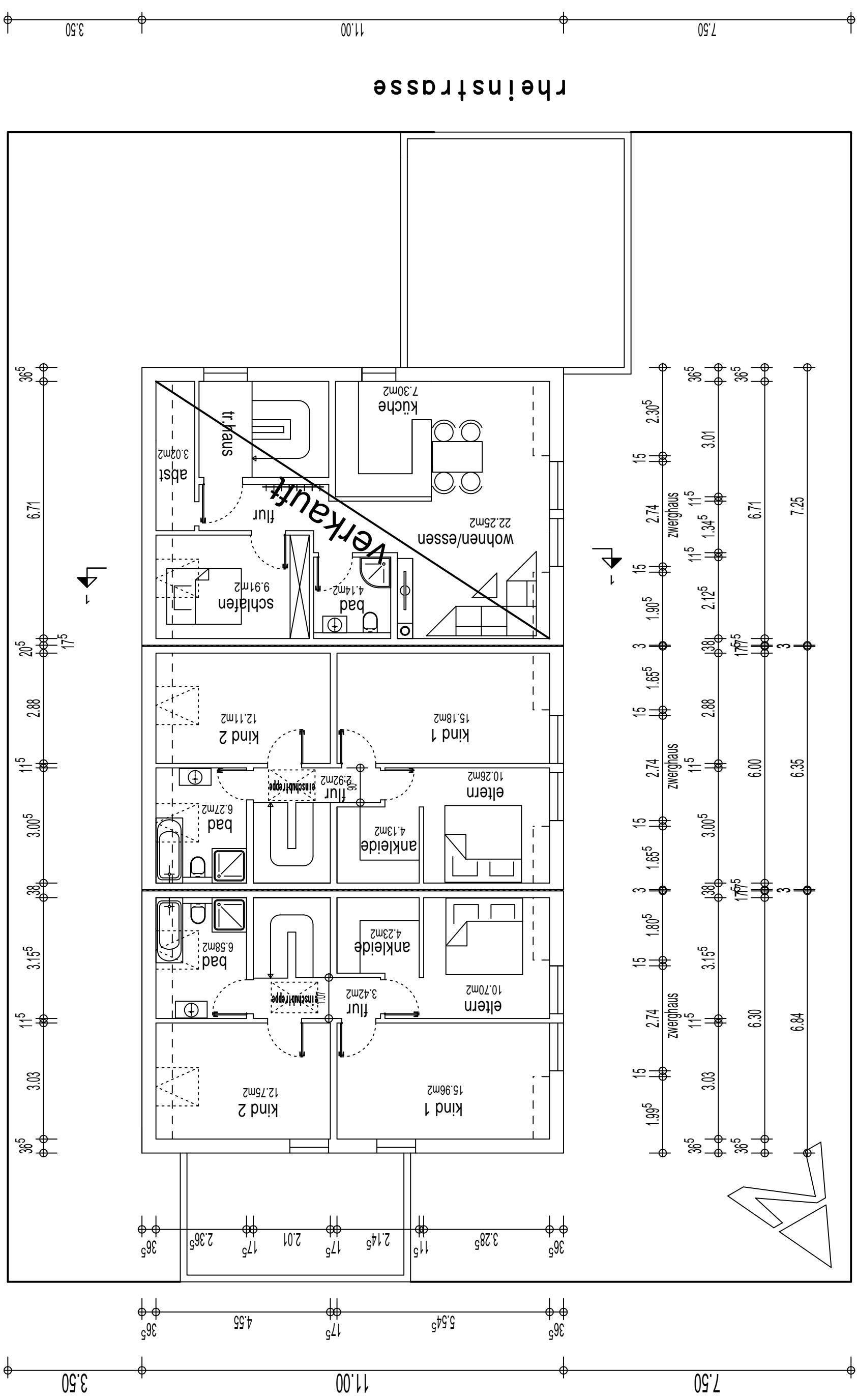


Haus 1

Haus 2

Haus 3

grundriss kellergeschoss



Haus 1

Haus 2

Haus 3

grundriss dachgeschoss

rheinstrasse

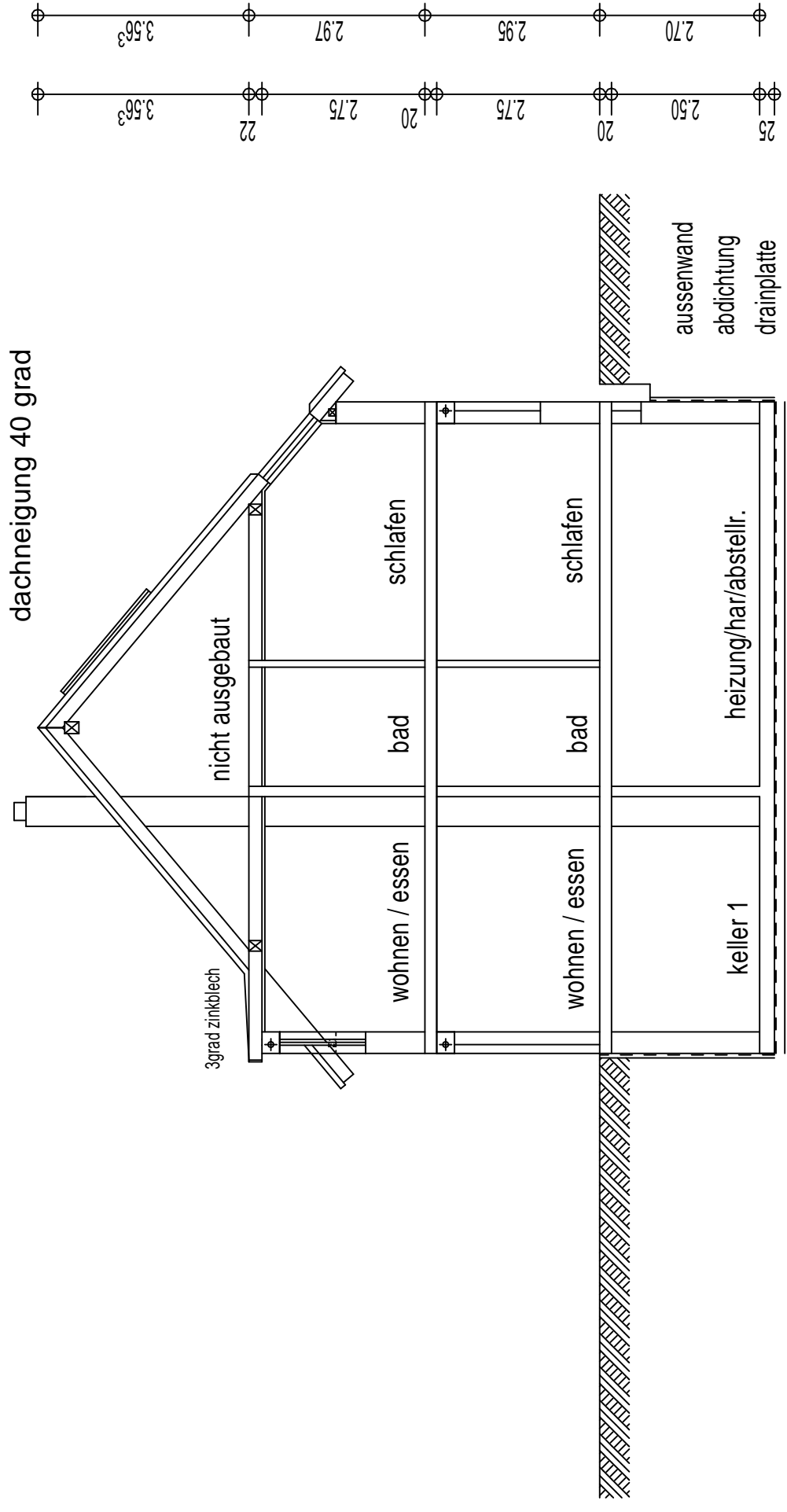
+9.48³

+5.92

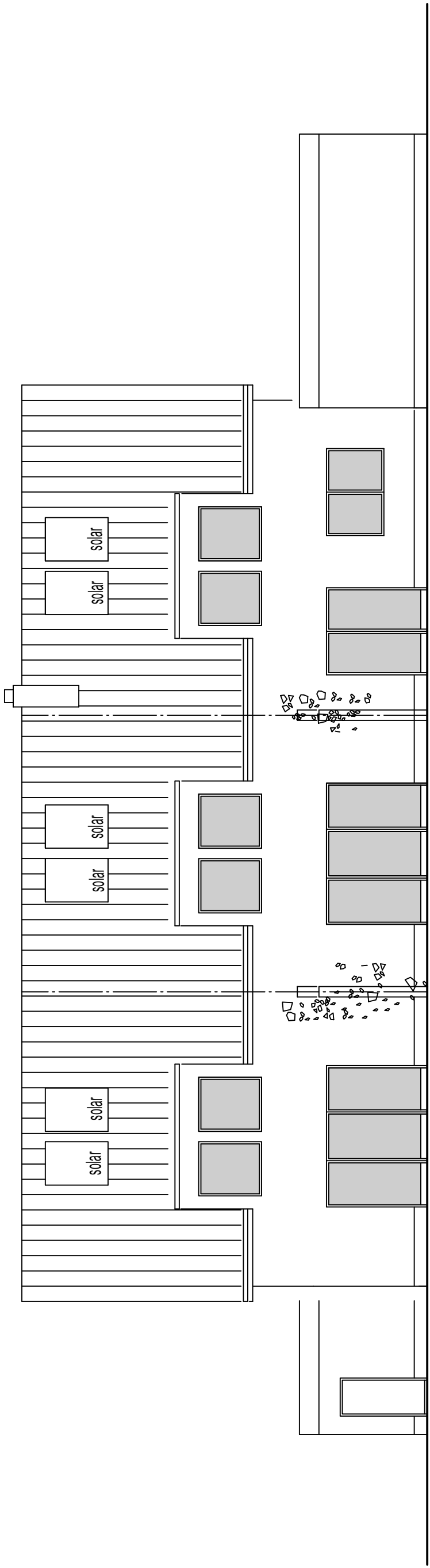
+2.95

+0.00

-2.70



schnitt 1-1

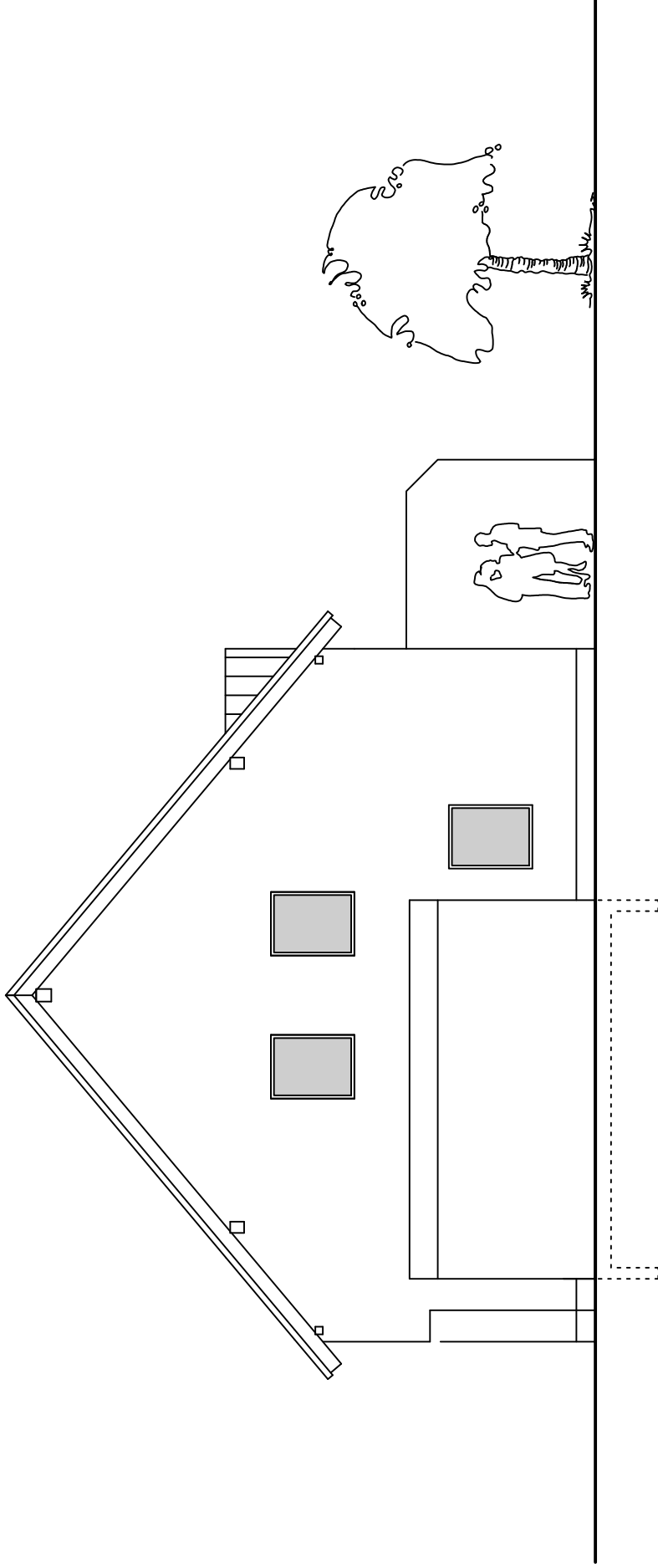


Haus 1

Haus 2

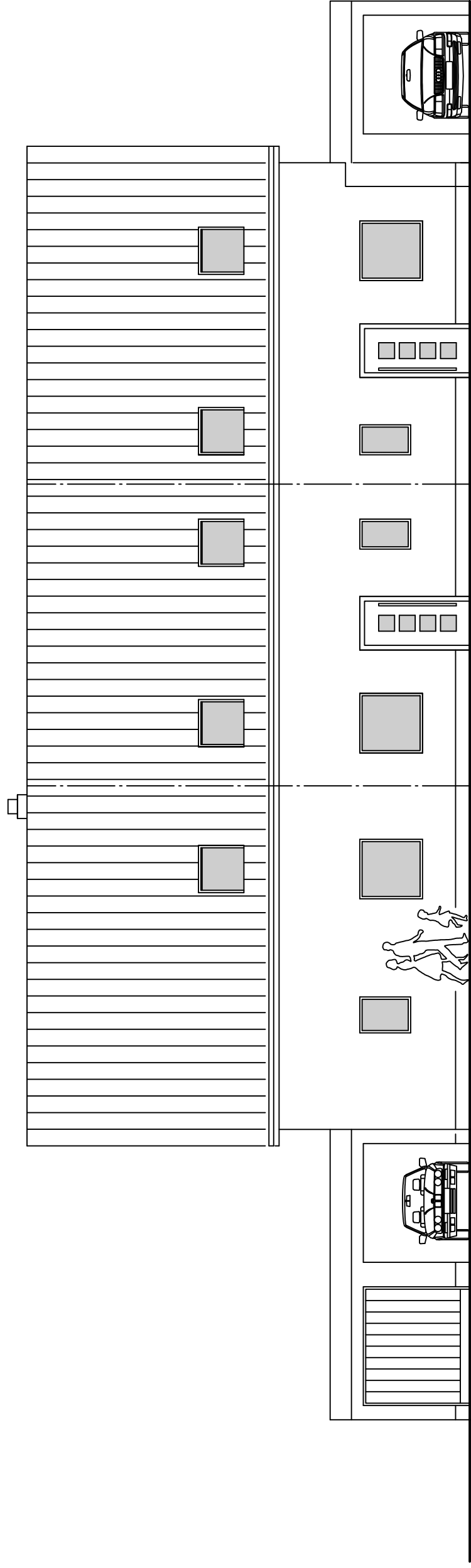
Haus 3

ansicht nordwesten



ansicht nordosten

Haus 3

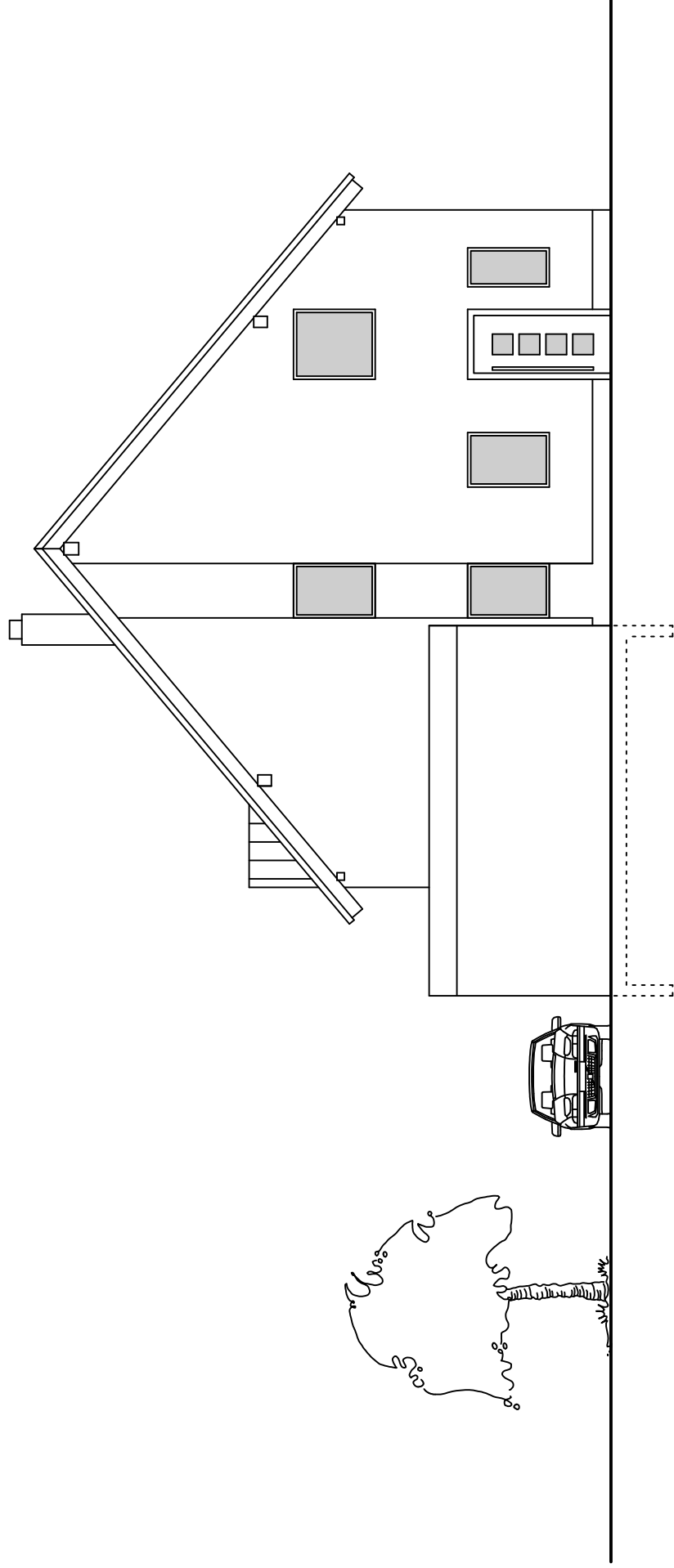


Haus 1

Haus 2

Haus 3

ansicht südosten



Haus 1

ansicht südwesten (rheinstrasse)